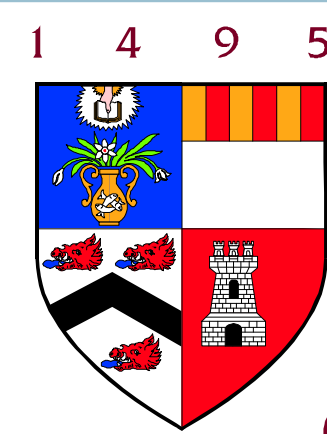


# PJMappingTab

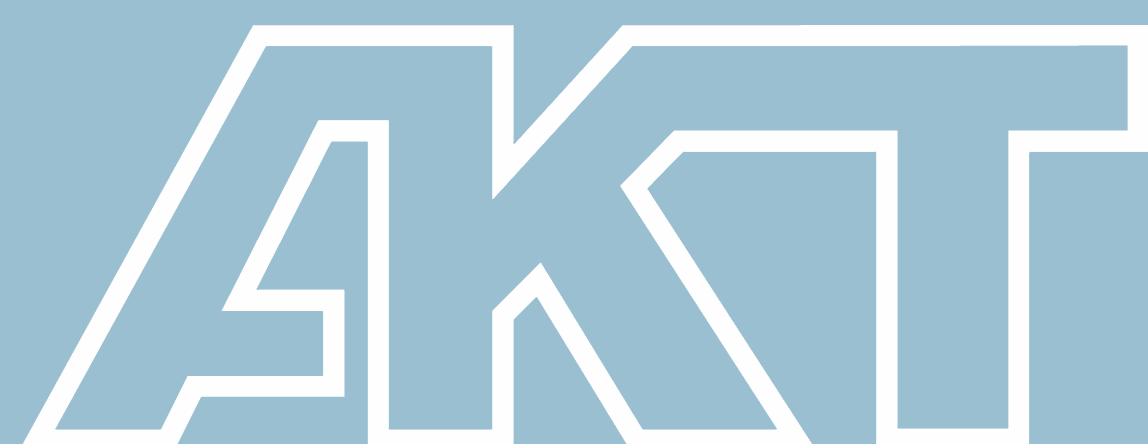
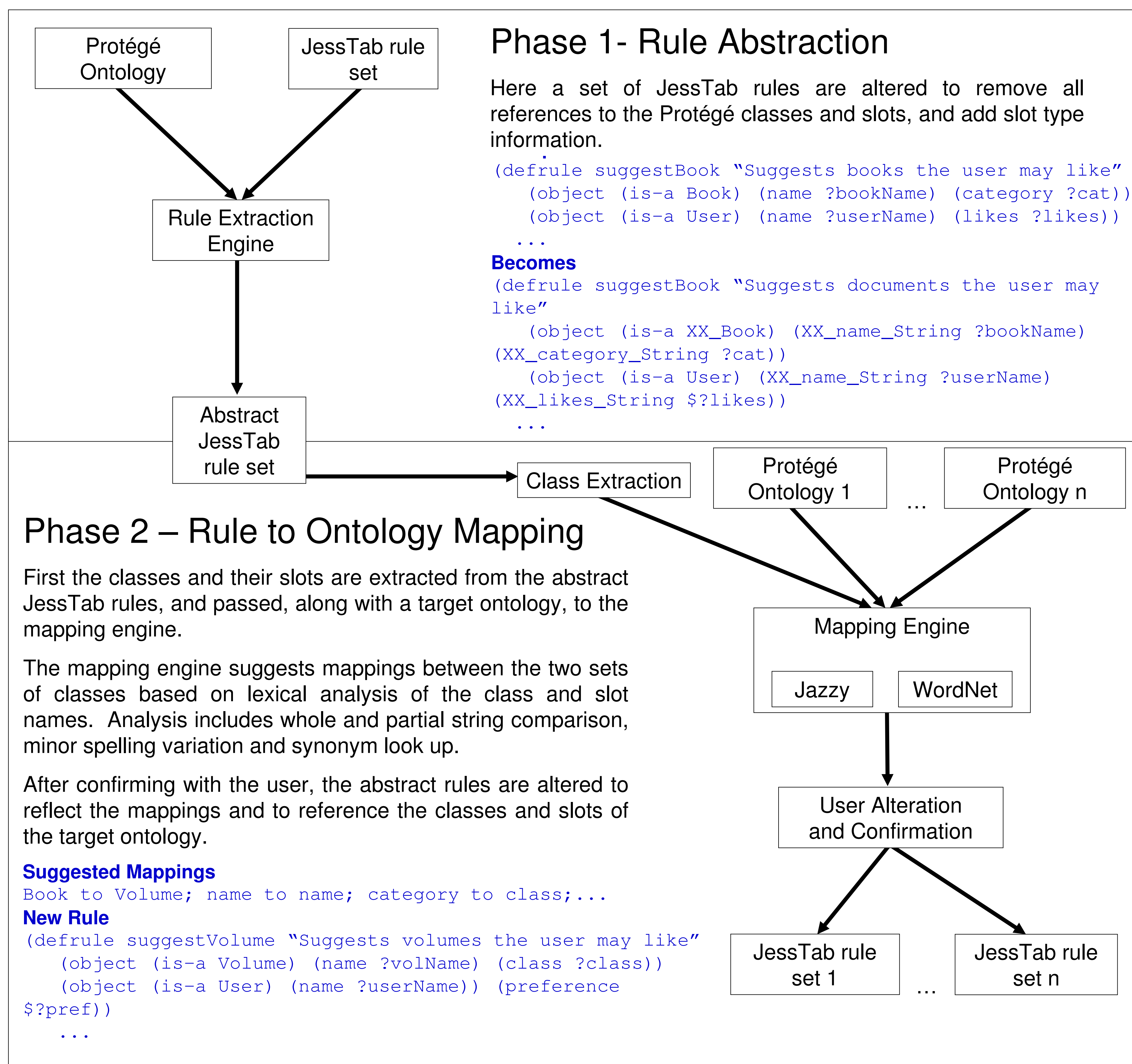
## Reusing JessTab Rules in Protégé

David Corsar, Derek Sleeman  
Department of Computing Science, University of Aberdeen, Aberdeen, UK



UNIVERSITY  
OF ABERDEEN

The JessTab plugin provides a simple, yet powerful way of performing rule based reasoning on a Protégé ontology with the JESS rule engine. However after a set of rules have been developed for one ontology, they are explicitly tied to that ontology as they name its particular classes and slots. Although an unavoidable requirement, this greatly hinders reusing them with further ontologies. To reuse the rules the developer has to manually define mappings between the classes and slots used in the JessTab rules and those in the second and subsequent ontologies. However this would be a tedious and very error prone task. PJMappingTab is a Protégé plugin designed to support the user with reusing JessTab rules by attempting to automatically map between the classes and slots used in a set of JessTab rules and those in a Protégé ontology. It does this in a two phase process.



### The Partners

University of Aberdeen  
University of Sheffield

University of Edinburgh  
University of Southampton

Open University

<http://www.actors.org/>